

QN-15710/NJ

NEW JERSEY CODES
 2009 INTERNATIONAL RESIDENTIAL CODE w/ NJ AMENDMENTS
 2009 NAHPC NATIONAL STANDARD PLUMBING CODE w/ NJ AMENDMENTS
 2009 INTERNATIONAL ENERGY CONSERVATION CODE w/ NJ AMENDMENTS
 2011 NATIONAL ELECTRICAL CODE w/ NJ AMENDMENTS

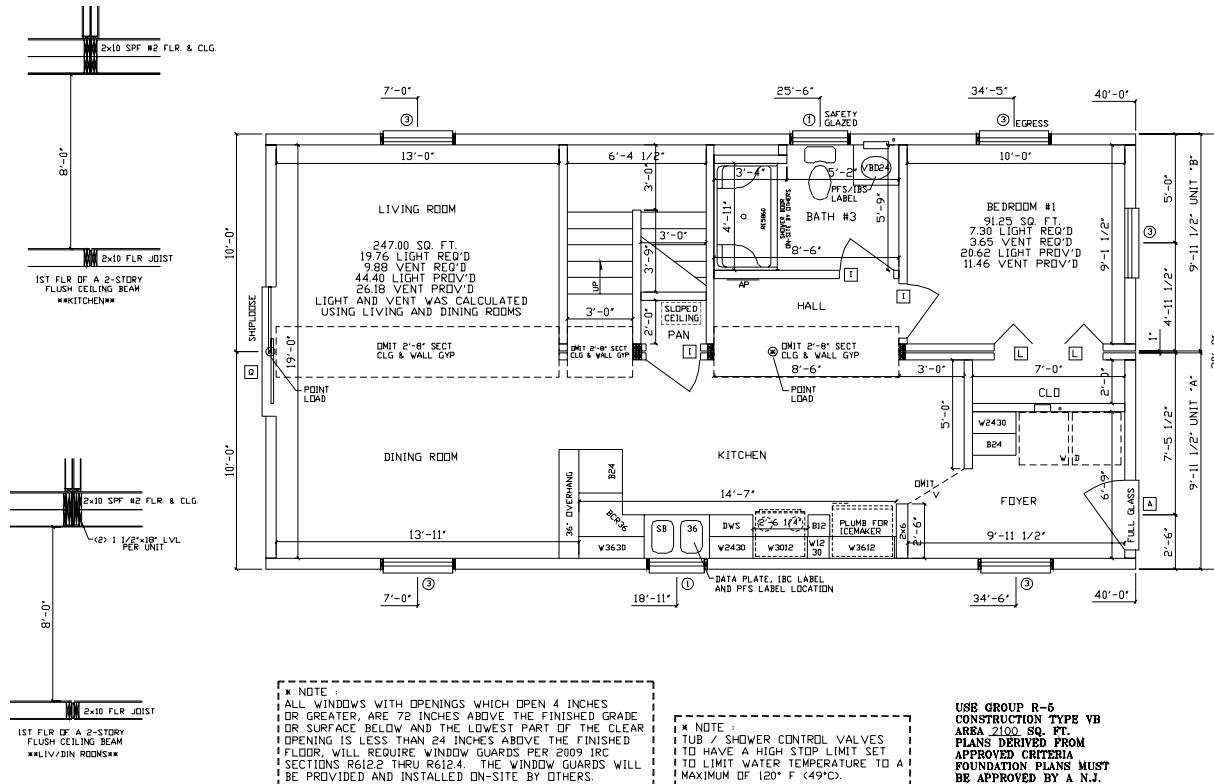
* NOTE 1
 SEE BRACED / SHEAR WALL AND FOUNDATION PLAN PAGES FOR HIGH WIND DETAILS AND REQUIREMENTS.

ALL EXT. LOAD BEARING HDR'S. WITH SPAN OF 4'-10" OR LESS WILL BE (3) 2x6 SPF #2 ALL OTHERS WILL BE SPECIFIED. ALL REQUIRED JACK STUDS SHOWN ARE 2x6 SPF #2.
 (SECT. 01, PG. 2.8)

THESE PLANS HAVE BEEN EXTRACTED FROM APPROVED BUILDING SYSTEMS FILED WITH THE STATE.

* NOTE 1
 DRYER VENT DUCT SHALL TERMINATE ON PAN OUTSIDE WALL OF A BUILDING NOT LESS THAN 3'-0" IN ANY DIRECTION FROM ANY OPENING INTO THE BUILDING AND MUST BE EQUIPPED WITH A BACKDRAFT DAMPER.

ALL M/W HDR'S. WITH SPAN OF 6'-9" OR LESS WILL BE (4) 2x6 SPF #2 ALL OTHERS WILL BE SPECIFIED.
 (SECT. 01, PG. 5.4)



* NOTE 1
 ALL WINDOWS WITH OPENINGS WHICH OPEN 4 INCHES OR GREATER, ARE 72 INCHES ABOVE THE FINISHED GRADE OR SURFACE BELOW AND THE LOWEST PART OF THE CLEAR OPENING IS LESS THAN 24 INCHES ABOVE THE FINISHED FLOOR, WILL REQUIRE WINDOW GUARDS PER 2009 IRC SECTIONS R612.2 THRU R612.4. THE WINDOW GUARDS WILL BE PROVIDED AND INSTALLED ON-SITE BY OTHERS.

* NOTE 1
 TUB / SHOWER CONTROL VALVES TO HAVE A HIGH STOP LIMIT SET TO LIMIT WATER TEMPERATURE TO A MAXIMUM OF 120° F (49° C).

USE GROUP R-5 CONSTRUCTION TYPE VB AREA 2100 SQ. FT. PLANS DERIVED FROM APPROVED CRITERIA FOUNDATION PLANS MUST BE APPROVED BY A N.J. P.E. OR R.A.

FRONT OF HOUSE

COMPLETE CONSTRUCTION & REMODELING/SEABERG		2040 TWO STORY 1ST STORY FLOOR PLAN		FILE NO: A15710(60)
BUILDING LOCATION: 124 RANDALL AVE. POINT PLEASANT BEACH, NJ		SEISMIC DESIGN CATEGORY: B		LAYER: SH1/FPL
SNOW ZONE: DCEAN		WIND LOAD: 37 PSF		SCALE: 1/8"=1'-0"
WIND ZONE: 119 MPH (3 SEC)		WIND LOAD: 20 PSF		SCALE: 1/8"=1'-0"
STAGE	DATE	DRAWN BY		
PRELIM.	1/21/14	KND		
REV. PRELIM.				
REV. FINAL.				
REV. FINAL.				
PURCHASING				
PRODUCTION				
THE PEAK OF PERFECTION APEX HOMES, INC. 7172 ROUTE 622 HADDONSBURG, PA 17840 Phone: (570) 837-8333				

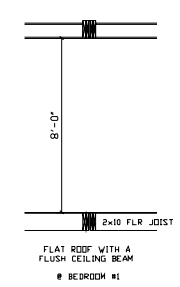
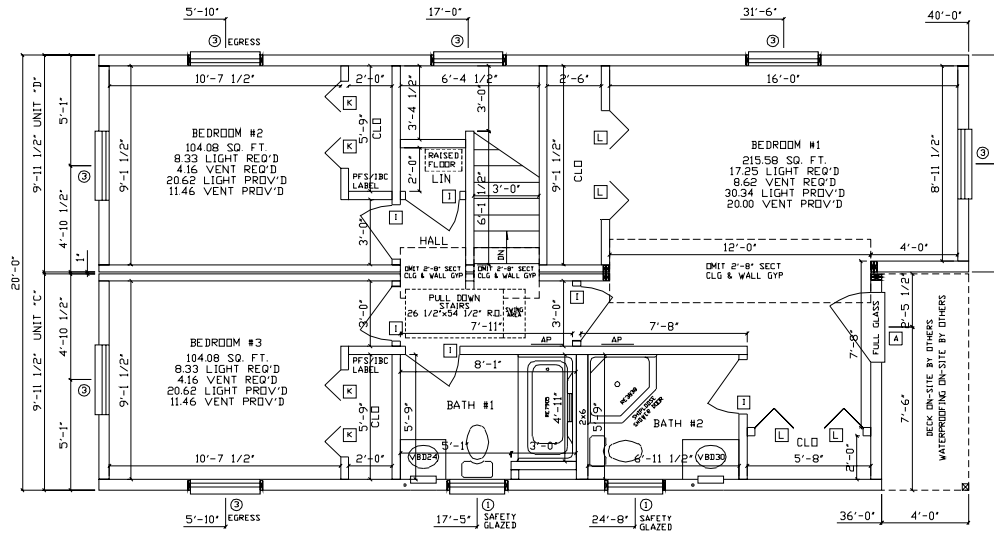
- NOTES:
- BUILDER IS RESPONSIBLE FOR PROVIDING A PROPERLY SIZED HEATING SYSTEM TO COVER A 37,000 BTU LOSS
 - HEAT LOSS WAS CALCULATED WITH R-19 FLOOR INSULATION
 - ANDERSEN STORM WATCH 400 SERIES WINDOWS-DP50 RATED
 - 1ST FLOOR SQUARE FOOTAGE = 800 SQ/FT

- MW CEILING BEAM @ KITCHEN TO BE (4) 2x10 SPF #2 (SEC. 1 PG 5.4)
- MW CEILING BEAM @ LIV/DIN TO BE (4) 1 1/2"x18" LVL (SEC 1 PG 5.8)
- 8'-0" HIGH CEILING
-
-

THESE PLANS HAVE BEEN EXTRACTED FROM APPROVED BUILDING SYSTEMS FILED WITH THE STATE.

ALL EXT. LOAD BEARING HDR'S WITH SPAN OF 5'-9" OR LESS WILL BE (3) 2x6 SPF #2 ALL OTHERS WILL BE SPECIFIED. ALL REQUIRED JACK STUDS SHOWN ARE 2x6 SPF #2.
(*SECT. 01, PG. 2.1*)

ALL M/W HDR'S WITH SPAN OF 7'-7" OR LESS WILL BE (4) 2x6 SPF #2 ALL OTHERS WILL BE SPECIFIED.
(*SECT. 01, PG. 5.1*)



* NOTE:
ALL WINDOWS WITH OPENINGS WHICH OPEN 4 INCHES OR GREATER, ARE 72 INCHES ABOVE THE FINISHED GRADE OR SURFACE BELOW AND THE LOWEST PART OF THE CLEAR OPENING IS LESS THAN 24 INCHES ABOVE THE FINISHED FLOOR. WILL REQUIRE WINDOW GUARDS PER 2009 IRC SECTIONS R612.2 THRU R612.4. THE WINDOW GUARDS WILL BE PROVIDED AND INSTALLED ON-SITE BY OTHERS.

* NOTE:
GASKET OR WEATHERSTRIPPING AND INSULATION, EQUIVALENT TO THE INSULATION ON THE SURROUNDING SURFACES, IS TO BE INSTALLED UPON COMPLETION OF THE SET-UP OF THE HOME AT CEILING ACCESS PANELS AND / OR PULL DOWN STAIRS ON SITE BY OTHERS.

* NOTE:
TUB / SHOWER CONTROL VALVES TO HAVE A HIGH STOP LIMIT SET TO LIMIT WATER TEMPERATURE TO A MAXIMUM OF 120° F (49°C).

- NOTES:
- 7/12 STORAGE RAFTER ROOF SYSTEM @ 16' D.C.
 - ANDERSEN STORM WATCH 400 SERIES DOUBLE HUNG WINDOWS-DP50 RATED
 - 2ND STORY SQUARE FOOTAGE: 760 SQ. FT.
 - 8'-0" CEILING HEIGHT
 - MW CEILING BEAM @ BEDROOM #1 TO BE (4) 2x10 SPF #2 (*SECT. 5, PG 5.1*)

- 6.
- 7.
- 8.
- 9.
- 10.

COMPLETE CONSTRUCTION & REMODELING/SEABERG		BUILDING LOCATION: 2040 TWO STORY 2ND STORY FLOOR PLAN	
		SEISMIC DESIGN CATEGORY: B	SCALE: 1/8"=1'-0"
STAGE PRELIM. REV. PRELIM. FINAL REV. FINAL PURCHASING PRODUCTION	DATE 1/21/14	DRAWN BY KND	WIND LOAD: 37 PSF
APPEX HOMES, INC. 7172 ROUTE 622 MIDDLEBORO, MA 01749 Phone: (508) 887-8333		SNOW ZONE: WIND ZONE: 20 PSF 119 MPH (3 SEC)	

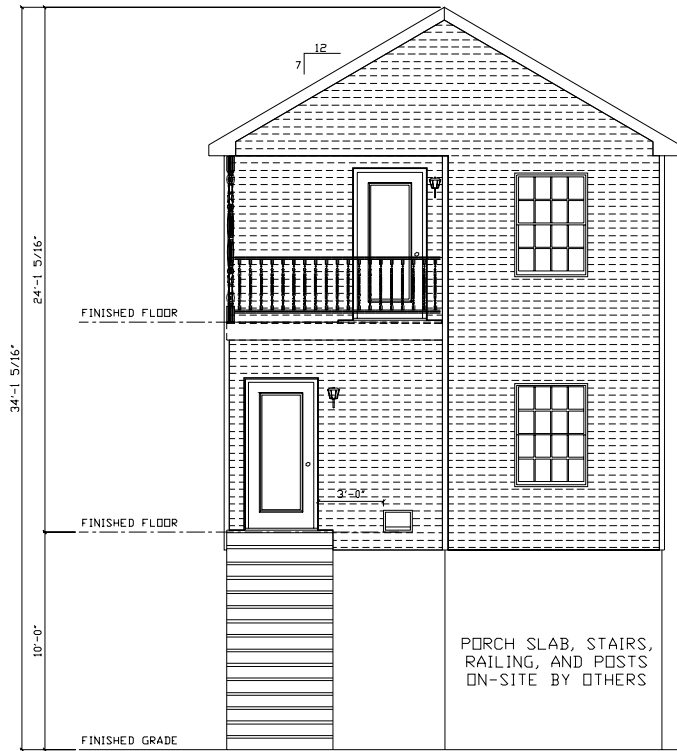


NJ CERTIFICATION FOR MODULARS
 YES NO

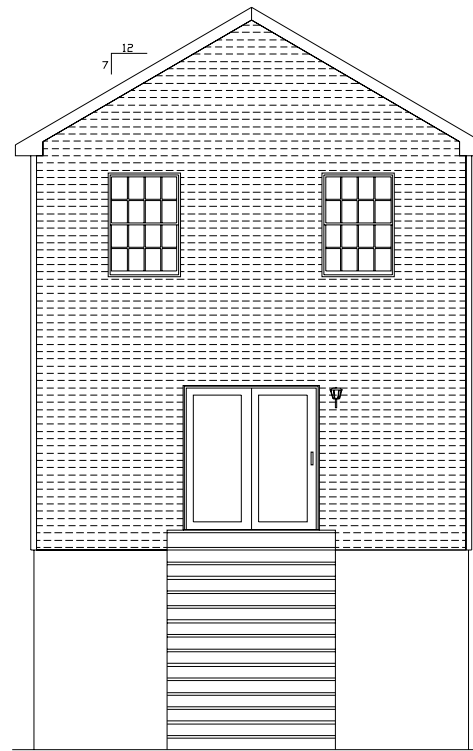
THE FOLLOWING ELEMENTS OF CERTIFICATION
 REQUIRED BY THE MANUFACTURER TO EXCLUDE EACH HOME ARE AS FOLLOWS:
 1) DESIGNATED ONLY FOR ERECTION ON A SITE-BUILT PERMANENT FOUNDATION
 2) NOT DESIGNED TO BE MOVED ONCE INSTALLED.
 3) DESIGNED AND MANUFACTURED TO COMPLY WITH NATIONALLY RECOGNIZED MODEL
 BUILDING CODE OR EQUIVALENT TO BUILDING CODES FOR ON-SITE HOUSING,
 OR WITH MINIMUM PROPERTY STANDARDS ADAPTED BY THE SECRETARY PURSUANT
 TO TITLE II OF THE NATIONAL HOUSING ACT, AND
 4) TO THE MANUFACTURER'S KNOWLEDGE IS NOT INTENDED TO BE USED OTHER THAN
 ON A SITE-BUILT PERMANENT FOUNDATION.

QN-15710/NJ

THESE PLANS HAVE BEEN EXTRACTED FROM APPROVED
 BUILDING SYSTEMS FILED WITH THE STATE.



FRONT ELEVATION
 SHIPLOOSE SIDING



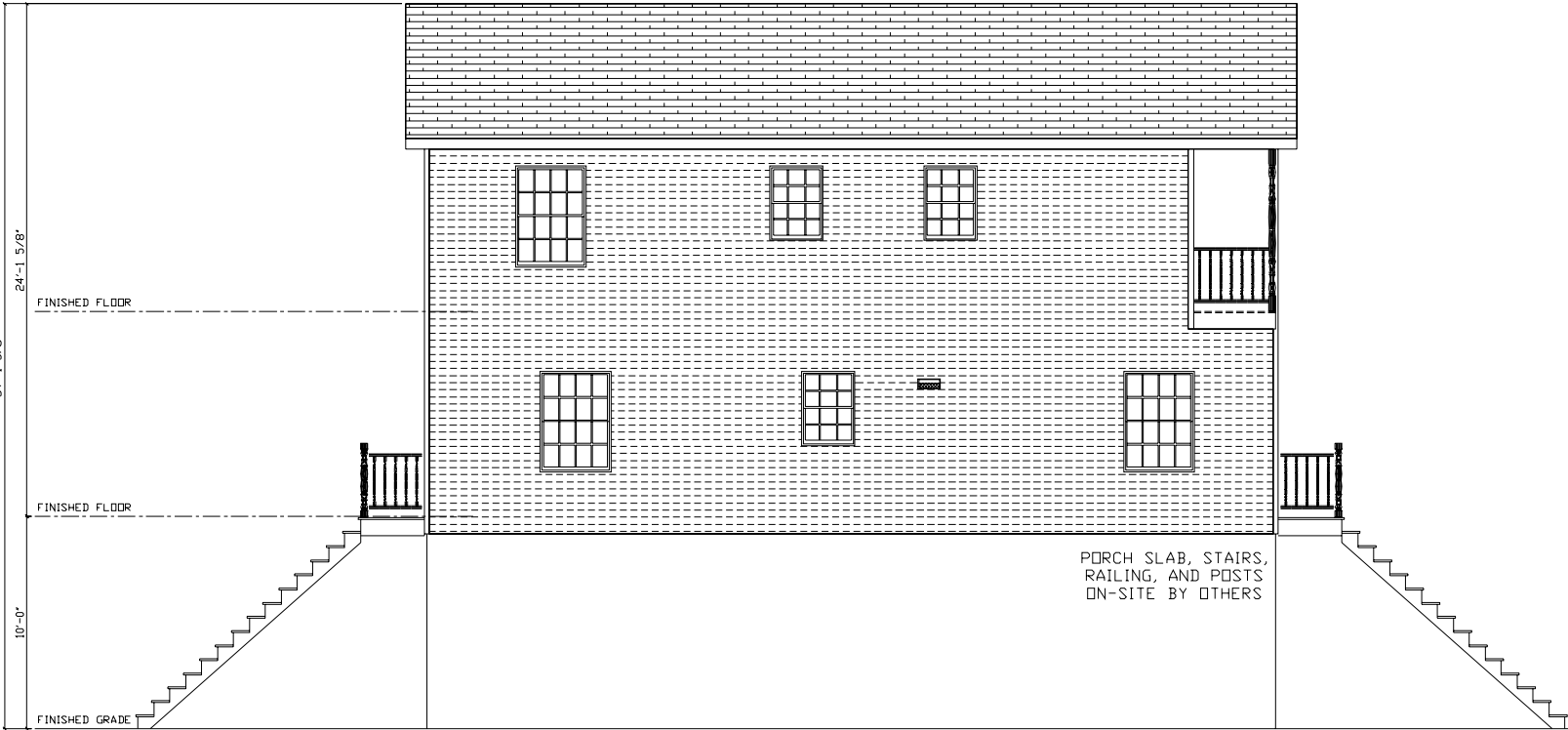
REAR ELEVATION
 SHIPLOOSE SIDING

NOTE: ACTUAL HOUSE MAY VARY FROM ELEVATION

COMPLETE CONSTRUCTION & REMODELING/SEABERG		2040 TWO STORY FRONT ELEVATION		FILE NO: A15710(60)
		ISBISMIC CATEGORY: B	SCALE: 1/8"=1'-0"	
BUILDING LOCATION: 124 RANDALL AVE. POINT PLEASANT BEACH, NJ		SNOW ZONE: WIND ZONE: 20 PSF 119 MPH (3 SEC)		WIND LOAD: 37 PSF
OCEAN	DRAIN BY KIND	DATE: 1/21/14	STAGE PRELIM. REV. PRELIM. FINAL. REV. FINAL. PURCHASING PRODUCTION	
THE PEAK OF PERFECTION APEX HOMES, INC. 7172 ROUTE 622 MIDDLEBORO, PA 17842 Phone: (610) 837-2333				


QN-15710/NJ

THESE PLANS HAVE BEEN EXTRACTED FROM APPROVED BUILDING SYSTEMS FILED WITH THE STATE.



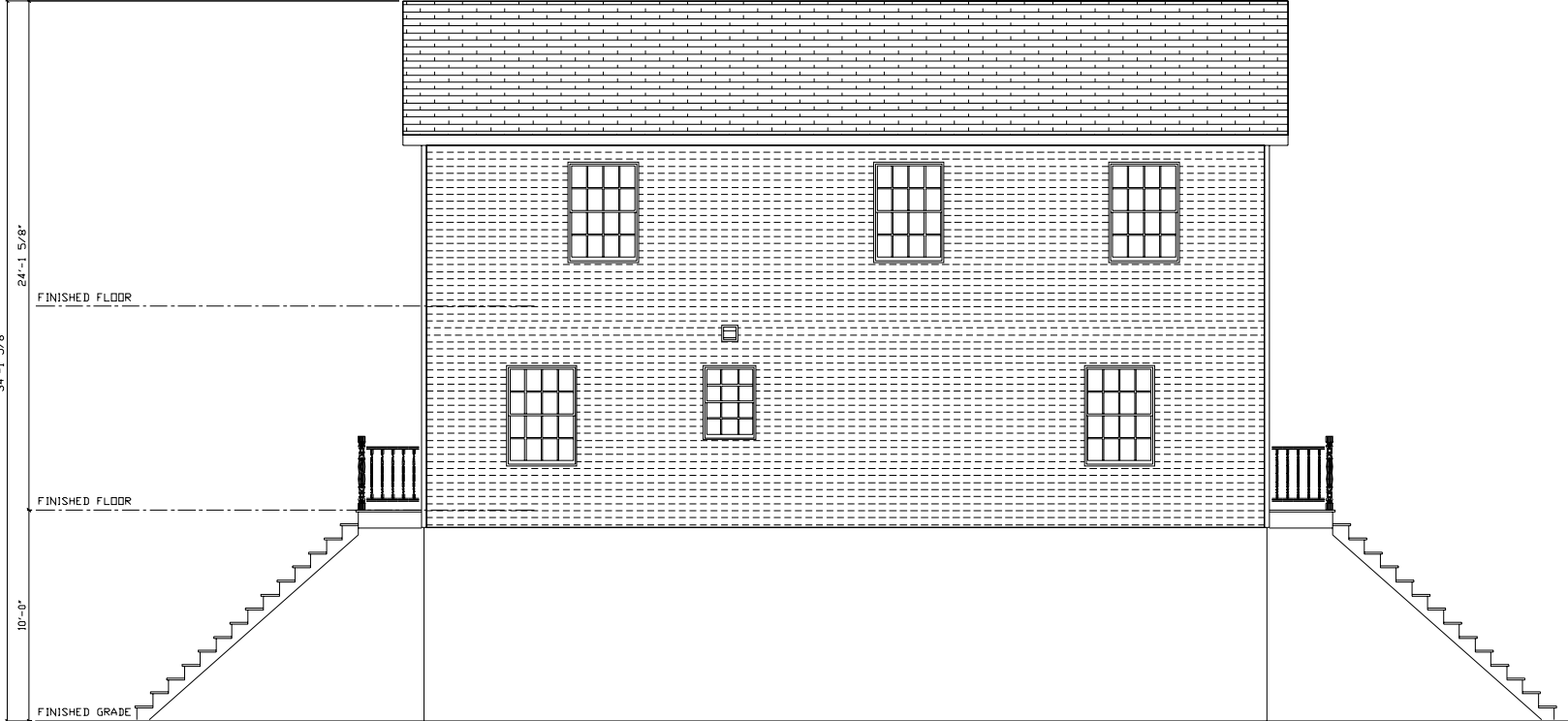
LEFT SIDE ELEVATION
 SHIPLoose SIDING

NOTE: ACTUAL HOUSE MAY VARY FROM ELEVATION

		7118 PEAK OF PERFECTION APEX HOMES, INC. 7172 ROUTE 622 HADDONSBURG, PA 17840 Phone: (610) 687-2333		COMPLETE CONSTRUCTION & REMODELING/SEABERG	
		STAGE PRELIM. REV. PRELIM. FINAL REV. FINAL PURCHASING PRODUCTION	DATE 1/21/14	DRAWN BY KND	BUILDING LOCATION: 124 RANDALL AVE. POINT PLEASANT BEACH, NJ OCEAN
		SNOW LOAD: 20 PSF	WIND ZONE: 119 MPH (3 SEC)	WIND LOAD: 37 PSF	SCALE: 1/8"=1'-0" LAYER: LEFT
					FILE NO: A15710(60)


QN-15710/NJ

THESE PLANS HAVE BEEN EXTRACTED FROM APPROVED BUILDING SYSTEMS FILED WITH THE STATE.



RIGHT SIDE ELEVATION
 SHIPLAKE SIDING

NOTE: ACTUAL HOUSE MAY VARY FROM ELEVATION

		COMPLETE CONSTRUCTION & REMODELING/SEABERG								
		BUILDING LOCATION: 124 RANDALL AVE. POINT PLEASANT BEACH, NJ OCEAN		2040 TWO STORY SIDE ELEVATIONS						
7178 PEAK OF PERFECTION APEX HOMES, INC. 7172 ROUTE 622 HADDONSBURG, PA 17840 Phone: (570) 837-8333		STAGE PRELIM. REV. PRELIM. REV. PRELIM. FINAL REV. FINAL PURCHASING PRODUCTION	DATE 1/21/14	DRAWN BY KND	SEISMIC DESIGN CATEGORY: B	SCALE: 1/8"=1'-0"	WIND LOAD: 37 PSF	SNOW ZONE: 20 PSF	WIND ZONE: 119 MPH (3 SEC)	FILE NO: A15710(60)